

ELECTRIC WINCHES

Range of industrial electric winches



INDUSTRIA

1 to 10 t



HUCHEZ

The quality of a French manufacturer

www.huchez.fr



Technical specifications and dimensions

EC REGULATION (Directive 2006/42/EC):

On electric winches, the following are obligatory: emergency stop and, when used for lifting, a limit switch as well as a load limiter for loads of more than 1,000 kg.



▲ Use: lifting or pulling

A range of compact electric winches initially designed for the industrial sector but perfectly adapted to all standard lifting or pulling/hauling applications for loads ranging from 1 to 10 tonnes. These robust machines are suitable for a number of different uses.

Vertical attachment possible.

- Opening hatches
- Lifting sluice gates
- Pulling heavy loads
- Hauling boats
- Tautening conveyor belts
- Lifting scenery and lighting
- ...

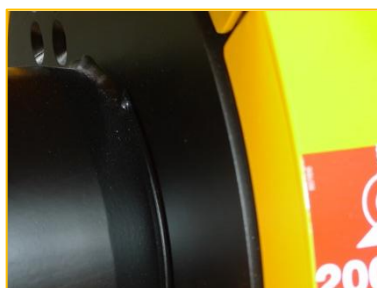
▲ Technical properties:

- 230/400 V - 50Hz three-phase brake motor. Protection IP 55.
- Range of motors from 1.1 to 9.2 kW.
- Airtight very low voltage electrical unit consisting of:
 - Contactors,
 - 24 V transformers,
 - Thermal circuit breaker.
 - Withdrawable button box with 3 m of rope.
- Reduced-maintenance planetary reduction gears.
- Numerous rope outlet possibilities.

▲ Options:

- Adjustable top and bottom limit switches (several ratios possible).
- Electronic load limiter by intensity control.
- Complete drum cowl.
- Rope press for back-and-forth operations or the single-layer use of several ropes.
- Grooved drum.
- Rope slack switch (stops the winch when the rope is no longer taut).
- Variable speed drive.

▲ Strong points:



A.

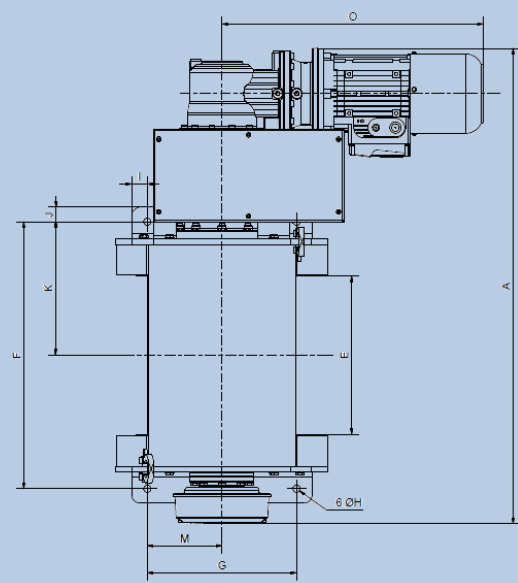
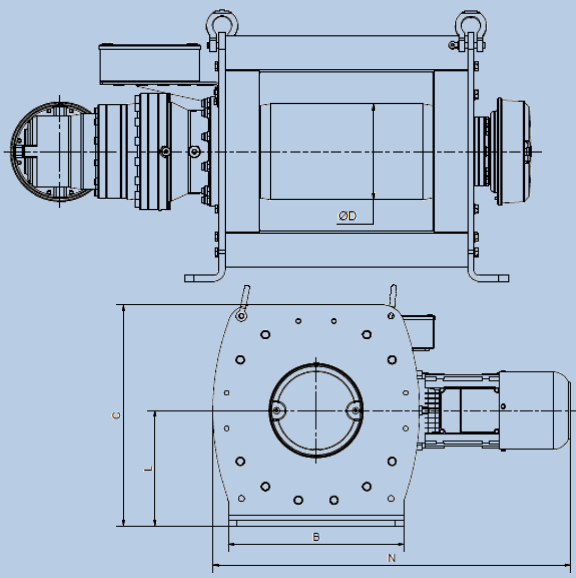


B.



C.

- A. Anti-escape system for the rope. Reduced space between the tie-rod and the drum.
- B. The tie-rods are mobile according to the rope outlet.
- C. Rope-press roller and cable slack switch incorporated under the upper tie-rod.



References	INDUSTRIA	1 T		2 T		3 T		4 T		5 T		6 T		7 T		8 T		9 T		10 T	
		05BT/10BT	05BT/09BT	03BT/06BT	02BT/05BT	03BT/07BT	02BT/06BT	02BT/06BT	02BT/05BT	02BT/05BT	03BT/05BT	02BT/05BT	02BT/05BT	02BT/05BT	02BT/05BT	02BT/05BT	02BT/05BT	02BT/05BT	02BT/05BT	02BT/05BT	03BT/05BT
A in mm		911	1050/1045	1095/1090	1169/1194	1194/1220	1224/1250	1241/1267	1241/1267	1241/1267	1288/1087	1314/1288									
B in mm		290	420	420	520	520	650	700	700	700	840	840									
C in mm		375	500	500	665	665	765	870	870	870	975	975									
Ø D in mm		125	219,1	219,1	292	292	323,9	355,6	355,6	355,6	406,4	406,4									
E in mm		350	350	350	350	350	350	350	350	350	350	350									
F in mm		525	590	590	600	600	600	720	720	720	720	720									
G in mm		240	330	330	420	420	420	620	620	620	750	750									
I in mm		25	45	45	50	50	115	40	40	40	45	45									
J in mm		23	32	32	30	30	30	50	50	50	47	47									
K in mm		263	295	295	300	300	300	360	360	360	360	360									
L in mm		188	262	262	350	350	395	455	455	455	515	515									
M in mm		120	165	165	210	210	210	310	310	310	375	375									
N in mm		716/748	823/902	823/902	905/984	954/1122	1013/1181	1103/1271	1133/1271	1133/1271	1176/1314	1176/1314									
O in mm		548/578	578/657	578/657	578/657	627/795	627/795	692/830	692/830	692/830	692/830	692/830									

References	INDUSTRIA	1 T		2 T		3 T		4 T		5 T		
		05BT	10BT	05BT	09BT	03BT	06BT	02BT	05BT	03BT	07BT	
Load 1st layer kg		1255		2420		3765		4985		6230		
Load top layer kg		1000		2000		3000		4000		5000		
No. of layers		3		3		3		3		3		
Rope capacity 1st layer m *		17		20		16		16		16		
Rope capacity top layer m *		60		71		59		60		60		
Rope Ø mm		8		11,5		14		18		18		
Speed 1st layer m/mn		4	8,5	4,5	8	2,5	4,5	2	4	2,5	3	
Speed top layer m/mn		5	10,5	5,5	9,5	3,5	6	2,5	5	6	7,5	
FEM		1Am		1Am		1Am		1Am		1Am		
Motor kW		1,1	2,2	2,2	4	2,2	4	2,2	4	3	9,2	
Power supply		3 Ph - 230/400 V		3 Ph - 230/400 V		3 Ph - 230/400 V		3 Ph - 230/400 V		3 Ph - 230/400 V		
Weight (bare winch, without rope) kg		176		209		337		294		345		Consult us

References	INDUSTRIA	6 T		7 T		8 T		9 T		10 T	
		02BT	06BT	02BT	06BT	02BT	05BT	06BT	05BT	03BT	05BT
Load 1st layer kg		7480		8725		9975		11120		12355	
Load top layer kg		6000		7000		8000		9000		10000	
No. of layers		3		3		3		3		3	
Rope capacity 1st layer m *		16		15		15		16		16	
Rope capacity top layer m *		60		60		60		62		62	
Rope Ø mm		20		22		22		24		24	
Speed 1st layer m/mn		1,5	5	1,5	4,5	2	4	1,5	4	2	3,5
Speed top layer m/mn		2	6	2	6	2,5	5	2	5	3	4,5
FEM		1Am		1Am		1Am		1Am		1Am	
Motor kW		3	9,2	3	9,2	4	9,2	3	9,2	3	9,2
Power supply		3 Ph - 230/400 V		3 Ph - 230/400 V		3 Ph - 230/400 V		3 Ph - 230/400 V		3 Ph - 230/400 V	
Weight (bare winch, without rope) kg		Consult us		Consult us		Consult us		Consult us		Consult us	



HUCHEZ

The quality of a French manufacturer

60420 Ferrières - France

Tel. +33 (0)3 44 51 11 33 - Fax. +33 (0)3 44 51 13 13

www.huchez.fr

The rope diameter corresponds to the load of the top layer.

* Rope and hook extra.